



BRINGING QUALITY TO THE SURFACE

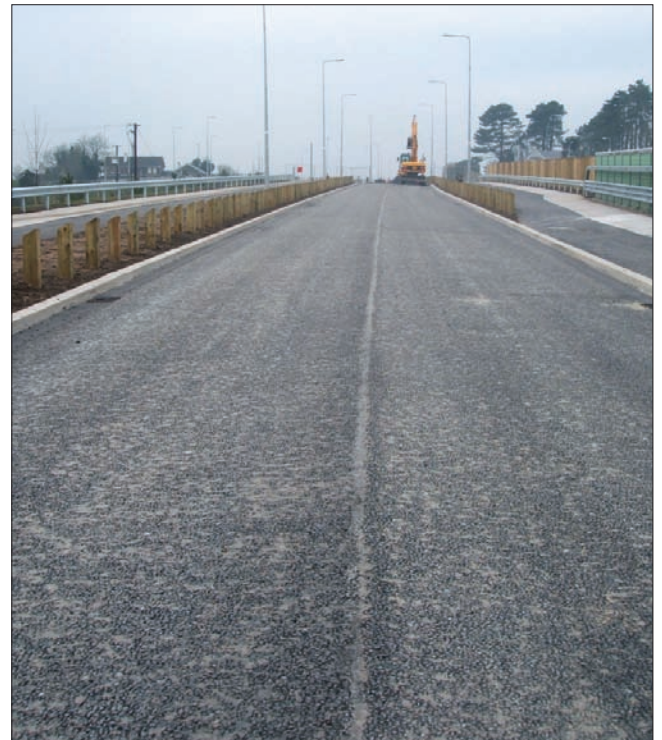
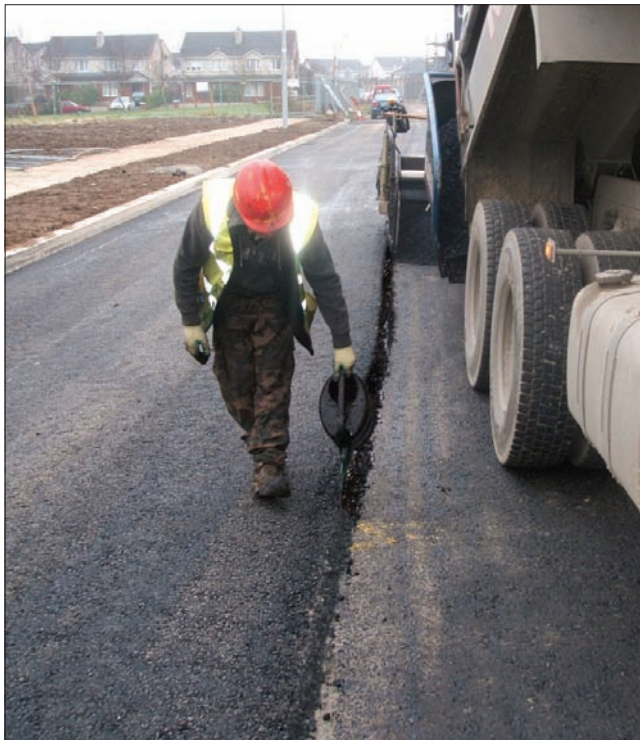
IRISH TAR

COLDPOUR

COLD-APPLIED JOINTING MATERIAL

PRINCIPAL APPLICATION

A polymer modified bitumen emulsion used for sealing of hot vertical asphalt surfaces.



ADVANTAGES OF COLDPOUR

- Water based, polymer material, applied cold as a single component.
- It provides an excellent bond between the asphalt layers.
- It is an environmentally friendly product.
- It is safe to handle and does not pose any health hazards when handled in accordance with good safety practice.



BRINGING QUALITY TO THE SURFACE

IRISH TAR

COLDPOUR

COLD-APPLIED JOINTING MATERIAL

Property	Unit	Test Method	Specification Range
Binder Content	%	EN1428	>63
Base Binder Penetration Ä 25C°	0.1mm	EN1426	50-70
Base Binder Softening Point	Degree C°	EN1427	>60



IRISH TAR

Available from

Irish Tar & Bitumen Suppliers, Alexandra Road, Dublin 1

Tel: 01 855 5117 / **Fax:** 01 855 4262 / **Email:** info@irishtar.ie / **www.irishtar.ie**

Irish Tar & Bitumen Suppliers is registered to IS EN ISO 9001:2008 Quality Standard